



5th Generation / 108 Years

# LARSON FAMILY RANCH

## 48TH ANNUAL PRODUCTION SALE

HAMILL, SD

Wednesday Feb. 22, 2017 – 12:30 P.M. (CST)

(Storm Date: Saturday, February 25, 2017)

**Volume  
Discount  
on Bulls!**

**125 YEARLING BULLS**

(Angus, Charolais, Simmental, Maine Anjou)

**325 BRED HEIFERS**

**PEDIGREED ANGUS, CHAROLAIS, MAINE ANJOU & RED ANGUS**

(Select group of 210 AI'd Comm. Black Angus Heifers/  
50 Red Angus Heifers mostly AI'd Red Angus – 20 F1 BWF – 12 Charolais  
33 Pedigreed Angus, Simmental, Maine Anjou)

**Presho Livestock Auction Co.**

Presho, South Dakota (on I-90) Airports Near

**FREE DELIVERY**  
within 150 miles of  
sale barn on purchase  
of 5 bulls or more and  
200 miles on 10 or  
more per buyer.  
**COMPLIMENTARY  
NOON MEAL!**

**START  
CALVING**  
March 6th, 2017

**75 ANGUS**

(50 K TESTED)

Tour of Duty, SAV Resource,  
Benefield Substance, Titalist,  
Sitz Investment, Hot Iron

*Many Heifer Bulls in the  
Offering*

**40 CHAROLAIS**

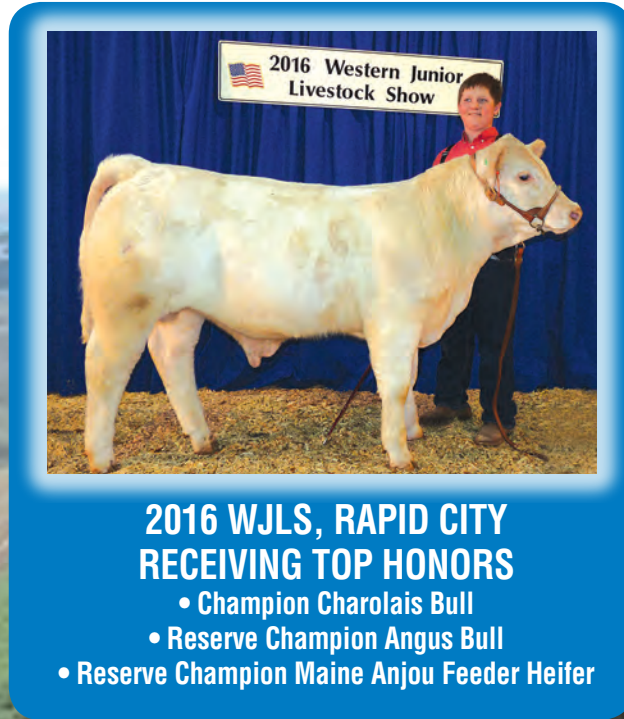
LT Ledger, No Doubt

**8 SIMMENTAL**

**& MAINE ANJOU**

**DVAuction**  
Broadcasting Real-Time Auctions

View catalog and bid online at [www.DVAuction.com](http://www.DVAuction.com)



- All Heifers have been Ultra Sounded
- Start Calving March 6, 2017 • All Veterinary work is done • Pelvic Measured • Both Scour Shots • Tested Negative BVD • 3VL6 HB
- Dewormed • Poured with Pro -B-
- Selected for Quality and Disposition
- Anthrax shot

**Ask About Our  
Calf Marketing Program**

**FULL HERD HEALTH PROGRAM**

**BREEDING SEASON GUARANTEE**

**WINTER FREE UNTIL MAY 1ST**

**2016  
ANGUS  
TOUR**

**Darrell / Frances**

605-842-3749 • 605-840-1290 • Fax: 605-842-0888

**Monty**

Cell: 605-840-8858

**Audie / Holly**

605-842-0260 • 605-842-5415 • [ahlarson@gwtrc.net](mailto:ahlarson@gwtrc.net)

FOR MORE INFORMATION, CATALOG OR VIDEO, CONTACT:

**[www.LarsonRanchLLC.com](http://www.LarsonRanchLLC.com)**

**WE WILL STAND BEHIND THE CATTLE  
AND STILL BE WORKING ON THIS PROGRAM INTO THE FUTURE**

Design and Printing by Pryncomm, P.O. Box 100, Pierre, SD 57501 1-800-675-4656

